

LED module 10W 2700K

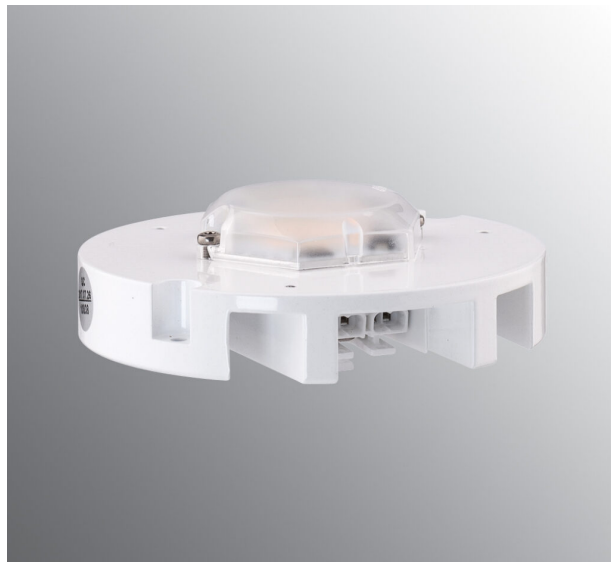
A LED module developed for Ifö Electric's all sockets with 123 mm thread. You can easily replace an existing light socket with a LED module by breaking the current, unscrew the old composition and attach the LED module.

| | |
|-------------|---------------|
| EAN / GTIN | 7312905405686 |
| E-number | 8245082 |
| Article no. | 1-54056-927 |



Specification

| | |
|---------------------|--------------------------|
| Weight | 0,24 kg |
| Diameter (mm) | 103 |
| Height (mm) | 32 |
| Effect | 10W |
| Lumen, light source | 1000lm |
| Colour temperature | 2700K |
| MacAdam | 3 SDCM |
| Life span | L80/B10: 47 000 h |
| Ra | Min 90 |
| Rated voltage | 230V |
| Dimmable | RC mode |
| Insulation class | I |
| Energy class | F |
| Cable area, max | Max 3x2,5mm ² |
| Bridging | Yes |
| Connection | Terminal block |
| Family | Light sources |



Luminaire specific information

The LED module is adapted for our bases with thread 123,5 mm. It works with all shades with this thread size. Connecting the power cables is done through terminal block on the module for max 3x2,5mm². Bridging is possible.

*** The device must under no circumstances be connected to the same phase as a magnetic ballast or other older fluorescent luminaires as these luminaires can generate overvoltage transients outside of EU regulatory standards when switched off or on. The luminaire can permanently damage or completely cease to function when connected.*

Subject to errors in text. We reserve the right to change the technical specifications (without notice).